

# WINTER HOKKAIDO TOURS IN JAPAN

~Journey to Hokkaido in Winter~



This product has been granted as a subsidiary aid (contribution) from the National Government (Hokkaido Prefectural Government).

**“We are GENKI, HOKKAIDO / Welcome! HOKKAIDO, Japan”**

## About Hokkaido Fukko (Recovery) Discount

**GENKI  
HOKKAIDO**  
We are pretty good Hokkaido. 元気な北海道

- The Hokkaido Fukko Discount is made available using subsidiary aid from the National Government and contribution from the Hokkaido Prefectural Government in an effort to promote tourism in the region after the 2018 Hokkaido Eastern Iburi Earthquake.
- From this subsidiary aid, discounts will apply on the following tours in this pamphlet for customers who will be making bookings with our company from Oct. 24 onward.

The campaign ends when the subsidiary aid runs out.



Welcome! **HOKKAIDO, Japan**



### 3-Day Bus Eastern Hokkaido Tour with Aurora Icebreaker and Drift Ice Walk®

[Dep. Sapporo, Arr. Abashiri / Memanbetsu]

■ Dep.: 2019/1/27, 31, 2/4, 11, 15, 20  
 ■ With English interpreter guide on all dates.  
 Tour runs from min. 2 participants.



#### ■ Tour Price / Per Person

ECS3H90811HHS

Dep. Date	1/27	1/31	2/15, 20	2/4, 11	
Adult	3 people / room	JPY 85,800	JPY 90,800	JPY 93,800	JPY 97,800
	2 people / room	JPY 90,800	JPY 92,800	JPY 95,800	JPY 98,800
Child (6-11 y/o)	3 people / room	JPY 78,800	JPY 83,800	JPY 86,800	JPY 90,800
	2 people / room	JPY 83,800	JPY 85,800	JPY 88,800	JPY 91,800

■ Included in Tour Price: Bus fare, Accommodation charge (2 nights, 2 dinners, 2 breakfasts), Entrance fees (excl. Sounkyo Ice Waterfall Festival (Day 1) and Shiretoko Drift Ice Festival (Day 2)), Aurora Icebreaker fare, Drift Ice Walk® fee, Dry suit rental, Lunch charge (Day 2), Interpreter Guide (Tour conductor) fee, Crew cost  
 \*Infant rate: JPY 45,500 (3-5 y/o), JPY 1,620 (2 y/o) (Pay to tour conductor on the day.)



#### ■ Itinerary

Day 1		Day 2		Day 3	
8:30	Dep. Sapporo St.	8:00 -8:20	Dep. hotel	6:20	Dep. hotel
▼	Biei-no-Oka (drive-by)	▼	Ryusei and Ginga Waterfalls (10)	▼	Drift ice walk®*2 (90)
▼	Asahiyama Zoo «Please arrange your own lunch.»(150)	▼	Okhotsk Bazaar «Lunch»	▼	Breakfast at hotel
▼	Kita no Mori Garden (Shopping) (45) Bear Park	▼	Aurora Icebreaker*1 (60)	▼	Road to the Sky (10)
16:50	Arrive in Sounkyo [Sounkaku Grand Hotel] Make your own way to Sounkyo Ice Waterfall Festival (ticket not included)	16:10 -16:40	Arrive in Shiretoko Utoro [Shiretoko Daiichi Hotel] Make your own way to Shiretoko Drift Ice Festival (*Period: 1/30-2/28) (Fee not included)	12:05	Arrive at JR Abashiri St. (Self-arranged transportation to destination)
				12:55	Arrive at Memanbetsu Airport (Self-arranged transportation to destination)

\*1. If the drift ice sightseeing aboard the Aurora icebreaker itinerary on Day 2 is canceled due to inclement weather, the itinerary will be changed to a visit to the Okhotsk Ryu-hyo Museum. Furthermore, if there is no drift ice along the route, the cruise will be for sightseeing only.  
 \*2. Drift ice walk® Entry Condition: 1. Height 130-190 cm, 2. Age: 7-74, 3. Weight: less than 110 kg, May be changed to Snow Play Activity if plan is called off.  
 Bus Operating Company: Sanwa Kotsu Co., Ltd. (Day 1 & 2), Memanbetsu Hire Co., Ltd. (Day 2 & 3)

#### Accommodation Info.

Day 1	<b>■ Sounkaku Grand Hotel</b> • Guest Room: Japanese-style Room (2-3 people) • Dinner, breakfast: Buffet	Day 2	<b>■ Shiretoko Daiichi Hotel</b> • Guest Room: Japanese-style Room (Bed, 2 people), Japanese-style Room (3 People) • Dinner, breakfast: Buffet
-------	--	-------	--



### 2-Day Stunning Tour to Two Ice Festivals (Sounkyo & Lake Shikotsu) and Biei Snow Fields

[Round Trip from Sapporo]

■ Dep.: 2019/1/28, 31, 2/3, 5, 12, 15  
 ■ With English interpreter guide on all dates. Tour runs from min. 2 participants.



#### ■ Tour Price / Per Person

ECS2H90311HHS

Dep. Date	1/28, 31, 2/3, 12, 15	2/5	
Adult	3 people / room	JPY 59,800	JPY 62,800
	2 people / room	JPY 59,800	JPY 62,800
Child (6-11 y/o)	3 people / room	JPY 55,800	JPY 58,800
	2 people / room	JPY 55,800	JPY 58,800

■ Included in Tour Price: Bus fare, Accommodation charge (1 night, 1 dinner, 1 breakfast), Entrance fees, Lunch charge (Day 2), Interpreter Guide (Tour conductor) fee, Crew cost  
 \*Infant rate: JPY 28,000 (3-5 y/o) (Pay to tour conductor on the day.)



#### ■ Itinerary

Day 1		Day 2		Accommodation Info.	
9:00	Dep. Sapporo St.	8:40	Dep. hotel	■ Sounkyo Kankou Hotel	<p>Open-air Bath</p>
▼	Asahiyama Zoo «Please arrange your own lunch.» (180)	▼	Biei-no-Oka (40)	• Guest Room: Japanese-style Room (2-3 people)	
▼	Hokkaido Ice Pavilion Kita no Mori Garden (Shopping), Bear Park (40)	▼	Herb Hill Furano «Lunch» (60)	• Dinner, breakfast: Buffet	
17:00	Arrive in Sounkyo [Sounkyo Kankou Hotel] Make your own way to Sounkyo Ice Waterfall Festival	▼	Lake Shikotsu Ice Festival (40)		
		18:40	Arrive at Sapporo St.		

Bus Operating Company: Sanwa Kotsu Co., Ltd.

Remarks for P. 2

- RSV. UNTIL: 15 days before
- Minimum Participants: 2
- Minimum People for Booking: 2
- If the minimum number of participants (2) is not met by 45 days before the scheduled date, the tour on that date may be cancelled.
- A different vehicle may be used instead of a bus depending on the number of participants (taxi, etc.)
- There is no vegetarian option available.
- Cancellation policy: 20% (20-8 days before departure), 30% (7-2 days before departure), 40% (day before departure), 50% (day of the tour, before departure), 100% (after departure)



■RSV. UNTIL: 15 days before \*Minimum Participants: 1 or 2, Minimum People for Booking: 1 or 2

Day	Itinerary	Duration, Dep. & Arr. Point in Hokkaido	
1	Dep. point → Ski Resort	Niseko Rusutsu	2-5 Day: Round-trip from Sapporo 6-7 Day: Round-trip from New Chitose Airport
2-6	Free during stay	Furano	3-5 Day: Round-trip from Sapporo
Final day	Ski Resort → Return point	Sahoro	6-7 Day: Round-trip from New Chitose Airport 4-7 Day: Round-trip from New Chitose Airport

### Remarks for P.3.4

■ Depending on the number of participants, the type of the round-trip bus may be different: a taxi, a taxi van, a minibus, a small- or medium-size bus, etc. All vehicles will be shared for the ride. ■ Accommodation: only for staying two or more days in a row.  
 ■ Tour Price: For infants (age 5 and under), please pay separately on the day. This pamphlet describes tour prices only for 2-4 day tours for Niseko/Rusutsu, and 3-5 day tours for Furano; however, the duration can be expanded up to 7 days for both. For details of tour prices or infant prices, please contact the travel agency. ■ Admission/experience fees and ski/snowboard rental fee not included in the tour price are to be paid separately on the day.

## Niseko Niseko United (Annupuri, Niseko Village, Grand Hirafu, HANAZONO)

■ Dep. Dates: 2018/12/2-2019/2/27

Video of Ski Resorts in Niseko



Niseko Annupuri International Ski Resort



Niseko Village Ski Resort



Niseko Mt. Resort Grand HIRAFU



Niseko Hanazono Ski Resort

### Bus Schedule

**2-5 Day Course: Round-trip from Sapporo**  
 First day: Dep. hotels in Sapporo (7:30-8:35) / Arrive at hotels in Niseko (11:20-11:55)  
 Final day: Dep. hotels in Niseko (14:05-14:40) / Arrive at hotels in Sapporo (17:30-18:30)  
 \*Sapporo city hotels (departure & drop-off) are limited. Please contact the travel agency.

**6-7 Day Course: Round-trip from Airport**  
 First day: Dep. New Chitose Airport (21:30) / Arrive at hotels in Niseko (0:20-0:55)  
 Final day: Dep. hotels in Niseko (8:05-8:40) / Arrive at New Chitose Airport (11:50-11:55)

### Accommodation Info.

## Niseko Grand Hotel

Guest Room: Twin (2 People)  
 Japanese-style Room (3 People)  
 Meals: Breakfast for each day of stay



Open-air Bath

### Tour Price

Per person	Adult	Child
2 Days	JPY 19,200 - 31,200	JPY 14,600 - 26,600
3 Days	JPY 24,300 - 45,600	JPY 17,400 - 38,700
4 Days	JPY 42,200 - 72,800	JPY 33,000 - 63,600

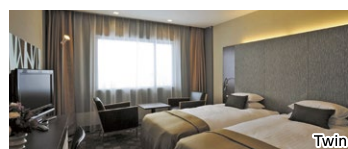
■ Included in Tour Price: Bus fare (round-trip), Accommodation charge (all days of staying w/ breakfast), Lift tickets for all days of staying (2/3-day tour: only Niseko Annupuri International Ski Resort; 4-day tour: all Niseko area). \*5 to 7-day tour: Lift tickets for all Niseko area. However, 6-day tour: Lift tickets for 4 days, and 7-day tour: 5 days.  
 ■ Cancellation policy: 20% (60-31 days before departure), 30% (30-18 days before departure), 50% (17-12 days before departure), 70% (11-8 days before departure), 100% (7 days before tour date)

HPT□H90111HHS □:2: 2 days,3: 3 days,4: 4 days,5: 5 days,6: 6 days,7: 7 days

### Accommodation Info.

## Niseko Northern Resort Annupuri

Guest Room: Twin (2-3 People)  
 Meals: Breakfast for each day of stay



Twin

### Tour Price

Per person	Adult	Child
2 Days	JPY 22,600 - 54,700	JPY 16,900 - 49,000
3 Days	JPY 31,100 - 95,300	JPY 22,000 - 86,200
4 Days	JPY 52,400 - 138,800	JPY 39,900 - 126,300

■ Included in Tour Price: Bus fare (round-trip), Accommodation charge (all days of staying w/ breakfast), Lift tickets for all days of staying (2/3-day tour: only Niseko Annupuri International Ski Resort; 4-day tour: all Niseko area). \*5 to 7-day tour: Lift tickets for all Niseko area. However, 6-day tour: Lift tickets for 4 days, and 7-day tour: 5 days.  
 ■ Cancellation policy: 20% (20-8 days before departure), 100% (7 days before tour date)

HPT□H90211HHS □:2: 2 days,3: 3 days,4: 4 days,5: 5 days,6: 6 days,7: 7 days

### Accommodation Info.

## Hilton Niseko Village

Guest Room: Twin (1-3 People)  
 Meals: Breakfast for each day of stay



Twin

### Tour Price

Per person	Adult	Child
2 Days	JPY 24,200 - 94,800	JPY 21,900 - 58,200
3 Days	JPY 33,600 - 174,000	JPY 31,300 - 103,900
4 Days	JPY 54,200 - 266,000	JPY 51,900 - 160,800

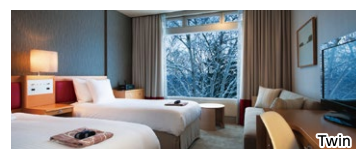
■ Included in Tour Price: Bus fare (round-trip), Accommodation charge (all days of staying w/ breakfast), Lift tickets for all days of staying (2/3-day tour: only Niseko Village Ski Resort; 4-day tour: all Niseko area). \*5 to 7-day tour: Lift tickets for all Niseko area. However, 6-day tour: Lift tickets for 4 days, and 7-day tour: 5 days.  
 ■ Cancellation policy: 50% (30-22 days before departure), 80% (21-8 days before departure), 100% (7 days before tour date)

HPT□H91611HHS □:2: 2 days,3: 3 days,4: 4 days,5: 5 days,6: 6 days,7: 7 days

### Accommodation Info.

## The Green Leaf Niseko Village

Guest Room: Twin (1-3 People)  
 Meals: Breakfast for each day of stay



Twin

### Tour Price

Per person	Adult	Child
2 Days	JPY 24,800 - 69,800	JPY 22,500 - 42,200
3 Days	JPY 34,800 - 124,800	JPY 32,500 - 71,900
4 Days	JPY 56,000 - 191,000	JPY 53,700 - 112,800

■ Included in Tour Price: Bus fare (round-trip), Accommodation charge (all days of staying w/ breakfast), Lift tickets for all days of staying (2/3-day tour: only Niseko Village Ski Resort; 4-day tour: all Niseko area). \*5 to 7-day tour: Lift tickets for all Niseko area. However, 6-day tour: Lift tickets for 4 days, and 7-day tour: 5 days.  
 ■ Cancellation policy: 100% (60 days before tour date)

HPT□H91711HHS □:2: 2 days,3: 3 days,4: 4 days,5: 5 days,6: 6 days,7: 7 days



# Furano, Sahoro (Accommodation + Round-trip bus + Lift tickets during stay)

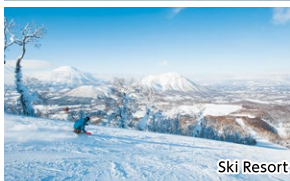
## Rusutsu Rusutsu Resort Ski Area

■ Dep. Dates: 2018/12/2-2019/2/27

[Video here](#)



Ski Resort



Ski Resort

### Bus Schedule

#### 2-5 Day Course: Round-trip from Sapporo

First day: Dep. hotels in Sapporo (7:30-8:35) / Arrive at hotels in Rusutsu (10:15-10:20)  
Final day: Dep. hotels in Rusutsu (15:45-15:50) / Arrive at hotels in Sapporo (17:30-18:30)  
\*Sapporo city hotels (departure & drop-off) are limited. Please contact the travel agency.

#### 6-7 Day Course: Round-trip from Airport

First day: Dep. New Chitose Airport (21:30) / Arrive at hotels in Rusutsu (23:15-23:20)  
Final day: Dep. hotels in Rusutsu (9:45-9:50) / Arrive at New Chitose Airport (11:50-11:55)

### Accommodation Info.

## Rusutsu Resort Hotel & Convention

Guest Room: Twin (1-3 People)  
Meals: Breakfast for each day of stay

### Tour Price

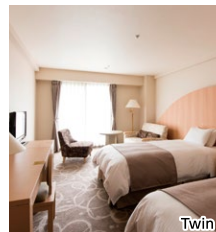
Per person	Adult	Child
2 Days	JPY 28,100 - 64,700	JPY 15,300 - 35,500
3 Days	JPY 41,100 - 114,300	JPY 29,100 - 69,500
4 Days	JPY 54,100 - 163,900	JPY 26,800 - 87,400

■ Included in Tour Price: Bus fare (round-trip), Accommodation charge (all days of staying w/ breakfast), Lift tickets for all days of staying

\*However, 6-day tour: Lift tickets for 4 days, and 7-day tour: 5 days.

■ Cancellation policy: 20% (20-8 days before departure), 30% (7-2 days before departure), 40% (day before departure), 50% (day of the tour, before departure), 100% (after departure)

HPT□H90311HHS (□: ②: 2 days, ③: 3 days, ④: 4 days, ⑤: 5 days, ⑥: 6 days, ⑦: 7 days)



Twin

### Accommodation Info.

## Westin Rusutsu Resort

Guest Room: Duplex (1-3 People)  
Meals: Breakfast for each day of stay

### Tour Price

Per person	Adult	Child
2 Days	JPY 32,700 - 113,200	JPY 23,900 - 55,100
3 Days	JPY 50,300 - 211,300	JPY 38,300 - 100,700
4 Days	JPY 67,900 - 309,400	JPY 52,600 - 146,200

■ Included in Tour Price: Bus fare (round-trip), Accommodation charge (all days of staying w/ breakfast), Lift tickets for all days of staying

\*However, 6-day tour: Lift tickets for 4 days, and 7-day tour: 5 days.

■ Cancellation policy: 20% (21-15 days before departure), 50% (14-4 days before departure), 80% (3-2 days before departure), 100% (day of the tour)

HPT□H90411HHS (□: ②: 2 days, ③: 3 days, ④: 4 days, ⑤: 5 days, ⑥: 6 days, ⑦: 7 days)



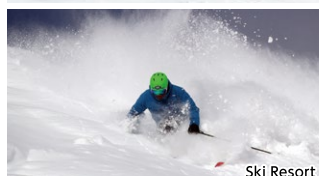
Exterior View

## Furano Furano Ski Resort

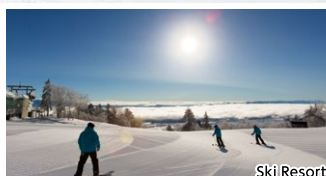
■ Dep. Dates: 2018/12/1-2019/2/26



Ski Resort



Ski Resort



Ski Resort

### Bus Schedule

#### 3-5 Day Course: Round-trip from Sapporo

First day: Dep. hotels in Sapporo (7:45-8:15) / Arrive at hotels in Furano (10:50-11:00)  
Final day: Dep. hotels in Furano (16:45-16:55) / Arrive at hotels in Sapporo (19:30-20:00)  
\*Sapporo city hotels (departure & drop-off) are limited. Please contact the travel agency.

#### 6-7 Day Course: Round-trip from Airport

First day: Dep. New Chitose Airport (17:55-18:05) / Arrive at hotels in Furano (20:20-20:35)  
Final day: Dep. hotels in Furano (7:55-8:10) / Arrive at New Chitose Airport (10:30-10:35)

### Accommodation Info.

## New Furano Prince Hotel

Guest Room: Twin (1-3 People)  
Meals: Breakfast for each day of stay

### Tour Price

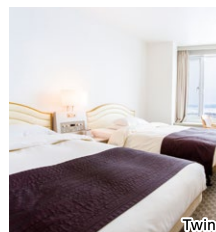
Per person	Adult	Child
3 Days	JPY 60,600 - 133,200	JPY 40,100 - 55,500
4 Days	JPY 83,300 - 192,200	JPY 56,800 - 79,900
5 Days	JPY 106,000 - 251,200	JPY 73,500 - 104,300

■ Included in Tour Price: Bus fare (round-trip), Accommodation charge (all days of staying w/ breakfast), Lift tickets for all days of staying

\*However, 6-day tour: Lift tickets for 4 days, and 7-day tour: 5 days.

■ Cancellation policy: 20% (20-8 days before departure), 30% (7-2 days before departure), 40% (day before departure), 50% (day of the tour, before departure), 100% (after departure)

HPT□H91411HHS (□: ③: 3 days, ④: 4 days, ⑤: 5 days, ⑥: 6 days, ⑦: 7 days)



Twin

### Accommodation Info.

## Furano Prince Hotel

Guest Room: Twin (1-2 People)  
Meals: Breakfast for each day of stay

### Tour Price

Per person	Adult	Child
3 Days	JPY 46,600 - 74,800	JPY 26,100
4 Days	JPY 62,300 - 104,600	JPY 35,800
5 Days	JPY 78,000 - 134,400	JPY 45,500

■ Included in Tour Price: Bus fare (round-trip), Accommodation charge (all days of staying w/ breakfast), Lift tickets for all days of staying

\*However, 6-day tour: Lift tickets for 4 days, and 7-day tour: 5 days.

■ Cancellation policy: 20% (20-8 days before departure), 30% (7-2 days before departure), 40% (day before departure), 50% (day of the tour, before departure), 100% (after departure)

HPT□H91811HHS (□: ③: 3 days, ④: 4 days, ⑤: 5 days, ⑥: 6 days, ⑦: 7 days)



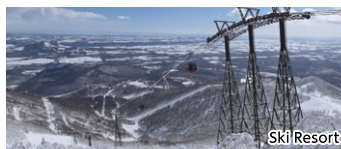
Twin

## Sahoro Sahoro Resort Ski Area

■ Dep. Dates: 2018/12/15-2019/2/25



Ski Resort



Ski Resort

### Bus Schedule

First day: Dep. New Chitose Airport (16:30) / Arrive at Sahoro Resort Hotel (18:30)  
Final day: Dep. Sahoro Resort Hotel (8:40) / Arrive at New Chitose Airport (10:40)

### Accommodation Info

## Sahoro Resort Hotel

Guest Room: Twin (1-3 People)  
Meals: Breakfast for each day of stay

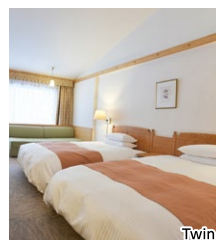
### Tour Price

Per person	Adult	Child
4 Days	JPY 21,700 - 65,700	JPY 13,500 - 38,900
5 Days	JPY 27,400 - 84,400	JPY 16,100 - 48,300
6 Days	JPY 33,100 - 103,100	JPY 18,700 - 57,700

■ Included in Tour Price: Bus fare (round-trip), Accommodation charge (all days of staying w/ breakfast), Lift tickets (4-day tour: 2 days, 5-day tour: 3 days, and 6-day tour: 4 days)

■ Cancellation policy: 20% (20-8 days before departure), 30% (7-2 days before departure), 40% (day before departure), 50% (day of the tour, before departure), 100% (after departure)

HPT□H91311HHS (□: ④: 4 days, ⑤: 5 days, ⑥: 6 days, ⑦: 7 days)



Twin



# Package Tour for Individual Customers (w/ Accommodation)

Remarks for P. 5

■Free plan: Customers should arrange their own transportation to the designated accommodation.  
 ■Cancellation policy: 20% (20-8 days before departure), 30% (7-2 days before departure), 40% (day before departure), 50% (day of the tour, before departure), 100% (after departure)

## 3-day Tour to Shiretoko! Day 2: Drift Ice & Bird Watching Cruise [Round-trip bus from Shiretoko]

HPT3H9191HHS

■Dep.: 2019/1/31-2/26 ■RSV. UNTIL: 15 days before ■Minimum People for Booking & Minimum Participants: 2



■Accommodation : Shiretoko Daichi Hotel  
 Large Communal Bath  
 Guest Room: Twin Bed Japanese-style Room (2 people)  
 Japanese/Western Combination Room (3 People)

■Itinerary ( ) Required time:mins

Day 1	Day 2
Self-arranged transportation to destination	8:15 11:00
Shiretoko Utoro Onsen Check-in after 15:00	13:00
Accommodation: Shiretoko Daichi Hotel w/ dinner	14:30 - 16:00
Free time at night Shiretoko Drift Ice Festival (Fee not included) (Limited time offer: 1/30-2/28)	16:00 18:35
	Breakfast at hotel Eastern Hokkaido Express Bus No. 5 Dep. hotel Roadside Station Shiretoko Rausu (Please arrange your own lunch.) (30) Drift Ice & Bird Watching Cruise (60) Roadside Station Shiretoko Rausu (Shopping, Walking nearby) Dep. Roadside Station Shiretoko Rausu Arrive at hotel Accommodation: Shiretoko Daichi Hotel w/ dinner Breakfast the next day



Steller's Sea Eagles and White-tailed Eagles  
 Photo credit: Shiretoko Nature Cruises, LTD.

■Tour Price / Per Person

Dep. Date	1/31, 2/1, 11-26	2/2-10
Adult (12 and up)	3 people / room JPY 32,400 2 people / room JPY 38,600	JPY 34,200 JPY 40,400
Child (6-11 y/o)	3 people / room JPY 16,200 2 people / room JPY 22,400	JPY 18,000 JPY 24,200

\*Children age 5 and under cannot participate.  
 ■Included in Tour Price: Accommodation charge (2 nights, 2 dinners, 2 breakfasts), Bus fare (Day 2), Cruise fare (Day 2)

\*Cruise on Day 2 may be cancelled due to inclement weather, etc. If cancelled on the previous day, corresponding costs (Day 2) for bus and cruise shall be refunded at a later date. If cancelled on the same day, amount of refund will vary, depending on the situation. If there is no drift ice along the route, the cruise will be for sightseeing only.

## 3-day Tour to Shiretoko Utoro / Akan Lakeside, Day 2: Sightseeing Bus & Aurora Icebreaker

HPT3H92011HHS

■Dep.: 2019/1/26-2/26 ■RSV. UNTIL: 15 days before  
 ■Minimum People for Booking & Minimum Participants: 2



■Accommodation: 1st night: Kiki Shiretoko Natural Resort  
 Guest Room: Twin (2 People) Japanese-style Room (3 people)  
 2nd night: New Akan Hotel  
 Guest Room: Japanese-style Room (2-3 people)

■Itinerary ( ) Required time:mins

Day 1	Day 2
Self-arranged transportation to destination	8:45 9:15 11:00
Shiretoko Utoro Onsen Check-in after 15:00	14:40
Accommodation: Kiki Shiretoko Natural Resort w/ dinner	16:20 17:45
Free time at night Shiretoko Drift Ice Festival (Fee not included) (Limited time offer: 1/30-2/28)	
	Breakfast at hotel Eastern Hokkaido Express Bus No. 2 Dep. hotel Oshinkoshin Falls (15) Aurora Icebreaker (60) Please arrange your own lunch. Lake Mashu (30) Tsurui Ito Crane Sanctuary (15) Arrive at hotel Accommodation: New Akan Hotel w/ dinner Breakfast the next day Free time at night Lake Akan Ice Festival (Limited time offer: 2/1-3/3)



■Tour Price / Per Person

Dep. Date	1/27-31	1/26, 2/12-14, 17-21, 24-26	2/1-11, 15, 16, 22, 23
Adult (12 and up)	3 people / room JPY 25,000 2 people / room JPY 28,700	JPY 28,000 JPY 31,700	JPY 29,900 JPY 33,600
Child (6-11 y/o)	3 people / room JPY 10,700 2 people / room JPY 14,400	JPY 13,700 JPY 17,400	JPY 15,600 JPY 19,300

\*Children age 5 and under cannot participate.  
 ■Included in Tour Price: Accommodation charge (2 nights, 2 dinners, 2 breakfasts), Bus fare (Day 2), Aurora Icebreaker fare (Day 2)

\*Aurora Icebreaker on Day 2 may be cancelled due to inclement weather, etc. If cancelled, corresponding costs for Aurora Icebreaker cruise shall be refunded at a later date. If there is no drift ice along the route, the cruise will be for sightseeing only.

## Only 25 Minutes from Sapporo by JR Special Express! 2-Day Iwamizawa Tour with Maple Lodge Accommodation & winter Fun Activities

HPT2H92411HHS

■Dep.: 2018/12/10-2019/2/27 ■RSV. UNTIL: 8 days before ■Minimum People for Booking & Minimum Participants: 2

You can experience as much winter as you want by staying at the lodge.



■Tour Price / Per Person

Dep. Date	12/10-2/27
Adult (12 and up)	3 people / room JPY 12,800 2 people / room JPY 11,800
Child (7-11 y/o)	3 people / room JPY 11,800 2 people / room JPY 11,800

■Included in Tour Price: Accommodation charge (1 night, 1 dinner, 1 breakfast) 9 experience choices (as many as you like), Drone Shooting (w/ data)  
 \*Children age 6 and under: No charge, but separate meal fees are required (Pay on the day).

■Itinerary

Day 1	Day 2
Self-arranged transportation to destination	Breakfast at hotel
JR Iwamizawa St.	You can enjoy as many of the 9 experiences as you like on the premises.
(Transportation service (round-trip))	(Transportation service (round-trip))
Accommodation: LOG HOTEL THE MAPLE LODGE w/ dinner	JR Iwamizawa St.
You can enjoy as many of the 9 experiences as you like on the premises. + Drone Shooting in the snow	Self-arranged transportation to destination

\*Drone shooting may not be available under severe snow, wind or rain. In such a case, you will be guided to a local winery to enjoy wine tasting. No refunds.



■Snow Experiences - Examples  
 Snowshoeing, Mini Ski Rental, Snow Rafting, Making Ice Glass, Kamakura Snow Hut Cafe, Wreath Making, Indoor Tennis, etc.



# Sunrise Ryokan Plan

Japanese / Western Combination Room : **HTL2H8011HHS(2018)**

Japanese / Western Combination Room : **HTL2H90611HHS(2019)**

Western-style Room : **HTL2H90711HHS(2019)**



1570-025

Hokkaido / Lake Toya

## The Lake View Toya Nonokaze Resort



Open-air Bath

### Access to Ryokan

From Toya Station: 25 min by bus to Sakuramachi bus stop. 2 min on foot from there.

### Meals (per night)

Breakfast: Buffet  
Dinner: Buffet

In 15:00 Out 11:00

### Room Type

Japanese/Western Combination Room (36.8 sqm) · Western-style Room (36.8 sqm)

Per Person [same rate for adult/child (6-11 y/o), Japanese yen, tax included]

		Jan.5-Feb.4, Feb.11-27 *1	Days excluding Saturdays and days before holidays from Oct.24- Dec.28	Saturdays and days before holidays from Nov.1-Dec.23	Jan.3,4, Feb.5-10
Japanese/Western Combination Room	4 People	<b>9,500</b>	<b>10,100</b>	<b>11,300</b>	<b>15,500</b>
	3 People	<b>10,700</b>	<b>11,300</b>	<b>12,500</b>	<b>16,700</b>
Western-style	2 People	<b>11,900</b>	—	—	<b>17,900</b>

Blackout Dates 1/1/23, 12/29 - 2019/1/2.

\*1) Saturdays and days before holidays : + JPY 2,400

Infant Facility Use Charge (3 - 5 years of age) : JPY 2,700

Bekkan : **HTL2H90411HHS**

Honkan : **HTL2H90511HHS**



1304-003

Hokkaido / Lake Akan

## Lake Akan Tsuruga Yuku no Sato



### Access to Ryokan

From Kushiro Airport: 65 min by bus. 10 min on foot from the bus stop.

### Meals (per night)

Breakfast: Buffet  
Dinner: Buffet

In 15:00 Out 10:00

### Room Type

Japanese-style Room (32 sqm) (Honkan:for 1-2 person) · Japanese/Western Combination Room (38 sqm) (Bekkan:for 3-4 person)

Per Person [same rate for adult/child (6-11 y/o), Japanese yen, tax included]

		Jan.3-31, Feb.17-27 *1	Jan.1,2, Feb.1-16
Bekkan	4 People	<b>27,100</b>	<b>30,700</b>
	3 People	<b>30,700</b>	<b>34,300</b>
Honkan	2 People	<b>21,100</b>	<b>23,500</b>
	1 Person	<b>43,300</b>	<b>47,600</b>

\*1) Saturdays and days before holidays : [1 Person] + JPY 4,300, [2 People] + JPY 2,400, [3/4 People] + JPY 3,600

Meal Infant Facility Use Charge (1 - 5 years of age) : JPY 1,080

**▶ HAVE MORE HOTEL PLANS, PLEASE ASK THE STAFFS.**

### For Reservations & Information

JTB Corp.

JTB Sunrise Tours is operated by JTB Corp.

Commissioner of Japan Tourism Agency  
Registered Travel Agency No. 64  
2-3-11 Higashishinagawa, Shinagawa-ku, Tokyo 140-8602



旅行業公正取引  
協議会 会員

A Certified Travel Service Manager is responsible for supervising all transactions conducted at the sales office where your travel arrangements are made. If you have any questions about your travel contract, please feel free to contact the Manager.